



## Annexure II

### Technical Detail Walk in Solar Cold Room for 1 °C

Description	Specifications
Room Dimension	Indicative External Dimension: - 40' x 8 x 8' Ft : - 20'x16'x8' Ft
Minimum Internal Volume of Storage area, CFT	1500 CFT
Module Mounting Structures	PV modules mounted on Metallic Structures, Withstand high wind upto 150 Km/Hr
Insulation of Walls & Ceiling	110 mm PUF Panels thickness on door, wall & ceiling 70 mm PUF thickness on flooring
PUF Density	40 Kg/M <sup>3</sup> +/- 2 kg/ M <sup>3</sup>
PUF Panel Finish	inner side & Exposed side PPGI Un-exposed PPGI
PPGI Sheet Type	Rib Required, holes plug sealed With vinyl caps & rivets, Flashing & locked together by cam locks.
PPGI Color	RAL 9002
External & Internal Body	Pre-Painted galvanized iron (PPGI) with minimum 0.5 mm and thickness of Stainless Steel with minimum Of 0.4 mm thickness
Doors Type	Flush Type Swing Door with Heavy Duty, 100mm Rubber gasket, internal safety release, Kick plat
Door Finish	Inner & outer PPGI /PPGI
Door Size Clear Opening	Minimum Opening of 6 feet Height x 2.5 Feet Width
Door Thick	110 mm PPGI
Room Temperature	1°C To + 15 Deg. C.
Refrigeration unit No's	1 Machine
Condensing Medium	AIR Cooled Split Type
Compressor capacity .	4.75 TR at -10 °C evaporating and 50 °C. condensing for 1 °C application. Cen. Condensing Temperature) @ 80 Hz.





Cooling system type	Air Cooled Vapor Compression System with Variable Speed compressor
Cooling Capacity	440 MJ for 48 hrs autonomy
Max. Power Supply	Three Phase Unit KW 415 ~ 600 V DC Power / 420 V AC Power
Refrigerant	HFC refrigerants with Zero Ozone Depletion Potential Example R134a / R407F / R407C etc
Evaporator Unit and Type	Indoor Unit 1Nos Unit Each Room
Evaporator	Powder Coating, Copper Grooved pipes Low noise, maintenance-free, Aluminium fin coils, AC Motor, easy to maintain mounting of all Brushless Axial fans, powder coated corrosion resistant casing, electric Defrost, easy cleaning & maintenance, side covered with Hatch lock doors
Thermal Storage Medium	Thermal Energy Storage by PCM (Water or relevant PCM) Temperature Backup with TES storage capacity 440 MJ
Solar Power Capacity	13.8 kWp for 1 °C application
Make Company	Monocrystalline, Vikram / Jackson
Battery Type, Size & Capacity	Lead acid, 4 x 12 V 200 Ah ,12 kWh Minimum 10% discharge rating Make: - Exide / Amaron / Eastman
Automation & Control	Adjustable Digital Indicator cum controller Automatic Operating Digital Temperature Indication System defrost indicator, On Off Switch, Compressor Running Indicator, Microprocessor base mobile app.
Daily Precooling Capacity	1000 Kg
Daily Precooling Temp.	Cold Room temperature from 35-30 to 1°C with in 24 hours For 4 °C applications.
Cold Room Temperature Maintenance	1 to 3 °C for up to 48 hrs. for 1 °C applications
Cold room Lights	Vapor Proof Bulk Head / LED





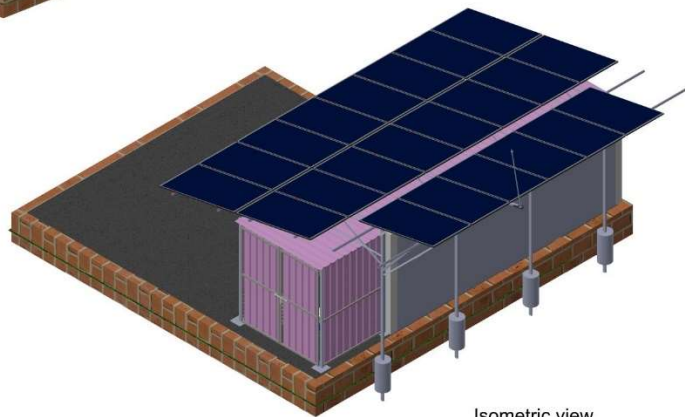
SolerCool Hightech Solutions Pvt Ltd

## Annexure IV

### Installation Pictures



Isometric view



Isometric view



"Ganga" 116/8/8, Behind Datta Mandir, Pashan-Sus Road, Pashan, Pune - 411021 MH, INDIA  
USA - 4138 E, State Route 73, Waynesville, OH 45068

[sales@solercoolhightech.com](mailto:sales@solercoolhightech.com)  
020-25870054 / 9623448344  
[www.solercoolhightech.com](http://www.solercoolhightech.com)



SolerCool Hightech Solutions Pvt Ltd



"Gangai" 116/8/8, Behind Datta Mandir, Pashan-Sus Road, Pashan, Pune - 411021 MH, INDIA  
USA - 4138 E, State Route 73, Waynesville, OH 45068

[sales@solercoolhightech.com](mailto:sales@solercoolhightech.com)  
020-25870054 / 9623448344  
[www.solercoolhightech.com](http://www.solercoolhightech.com)